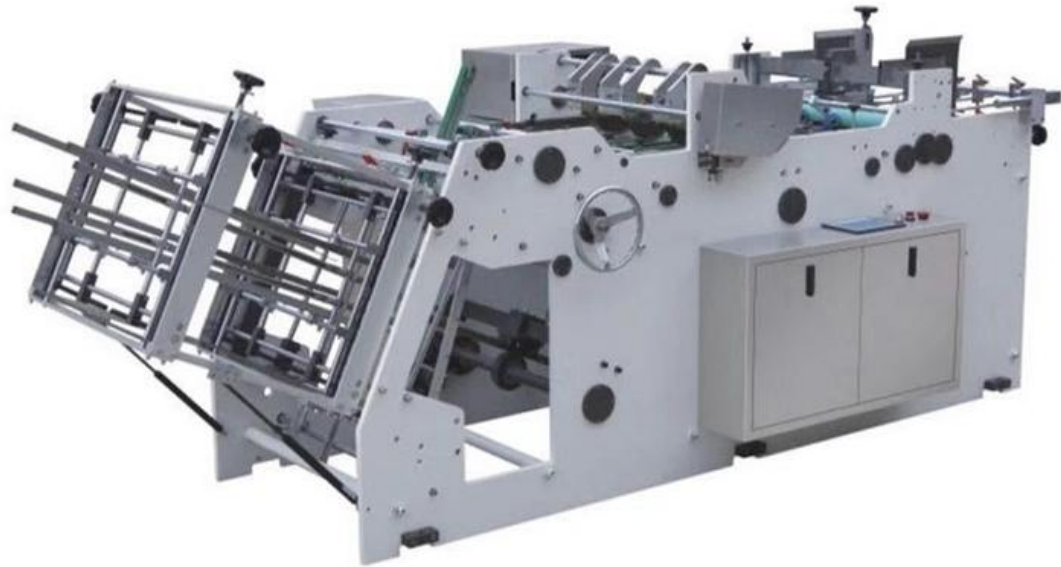


WENZHOU FEIHUA PRINTING MACHINERY CO.,LTD

High Speed Automatic Hamburger Box Making Machine

Model: LJZHJ-800



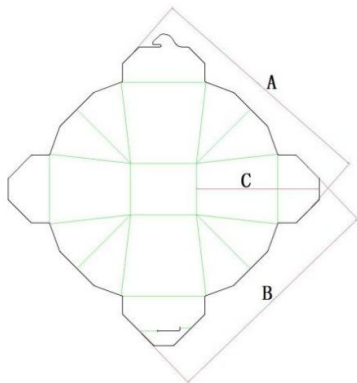
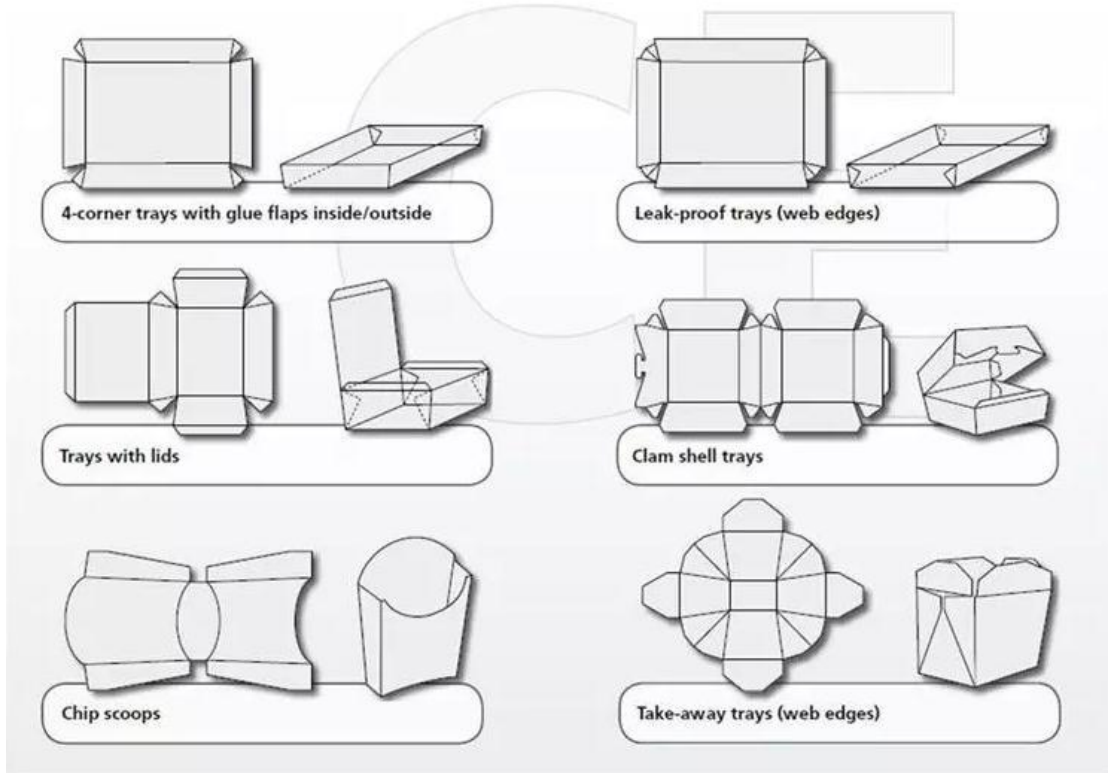
Applications:

The paper carton erecting machine is an ideal choice to produce hamburger boxes, French fries box, food tray, lunch box, Chinese noodle box, hot dog box, etc.

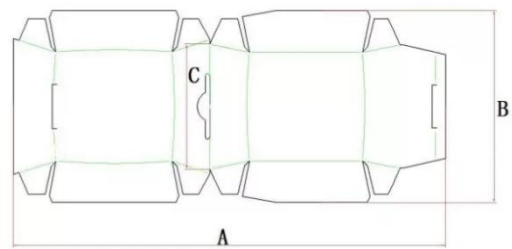
It adopts micro-computer.PLC,alternating current frequency converter,the vacuum-sucking paper feeding,auto gluing,automatic paper tape counting,and chain drive.All of these main parts and electric control system adopts imperted brand to guarantee steady working,precise positioning,smooth running,safety and reliability operation.



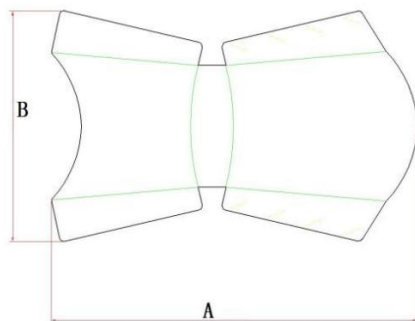
WENZHOU FEIHUA PRINTING MACHINERY CO.,LTD



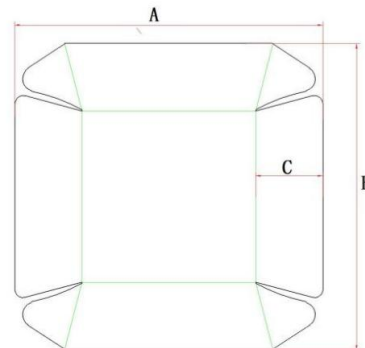
A: 100-450mm. B: 100-450mm. C: 15-220mm



A: 100-620mm. B: 100-450mm. C: 60-220mm



A: 100-400mm. B: 100-450mm



A: 100-450mm. B: 100-450mm. C: 15-220mm

WENZHOU FEIHUA PRINTING MACHINERY CO.,LTD

Product Parameters

Type	LJZHJ-800
Production capacity	50-160pcs/min
Suitable Material	200-600g/m ² card paper,PE coated paper,kraft paper,corrugated paper
Length	L80-450mm,degree:5° -40°
Width	B100-600mm Height H15-200mm
Total Power	4.0KW
Total Weight	2.2T
Overall Dimension	3600X1500X1700mm
Power Source	380V 50HZ

Features

1. Intelligent system with Siemens PLC+HMI, all parameters can be set to meet production requirements
2. Touch screen Easy operate, smart alarm system, defective self-detection
3. Optical fiber to ensure high-speed operation stability
4. Servo motor with photocell automatic correction ensure accuracy
- 4 .The raw material loading and unloading adopts the pneumatic cylinder lifting structure, the roll adopts the full automatic constant tension control.
- 5 .Heavy duty machine body operating steady, lifelong less maintenance.

Main configuration

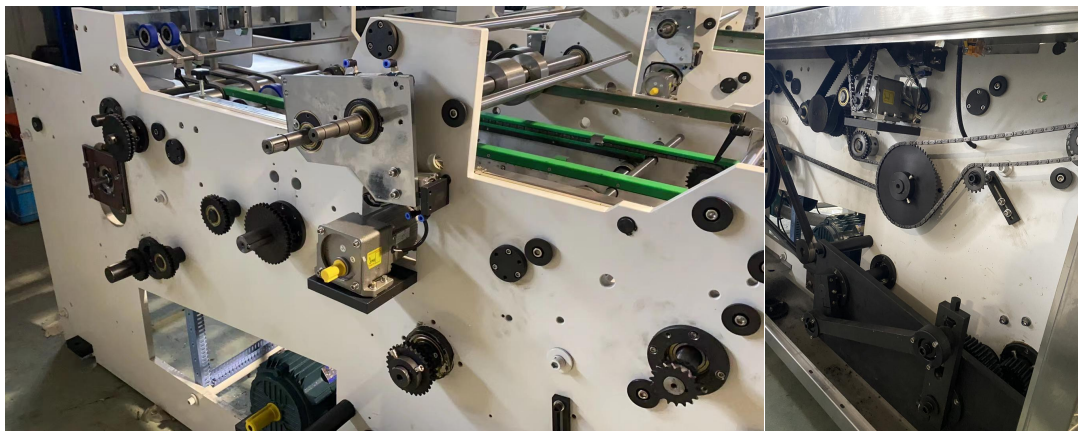
1.The carton erecting machine is highly efficient.The working speed is 50-160 pieces per minute and finished produces are automatically counted.It can be customized to do different size and shaped boxes though changing mold.



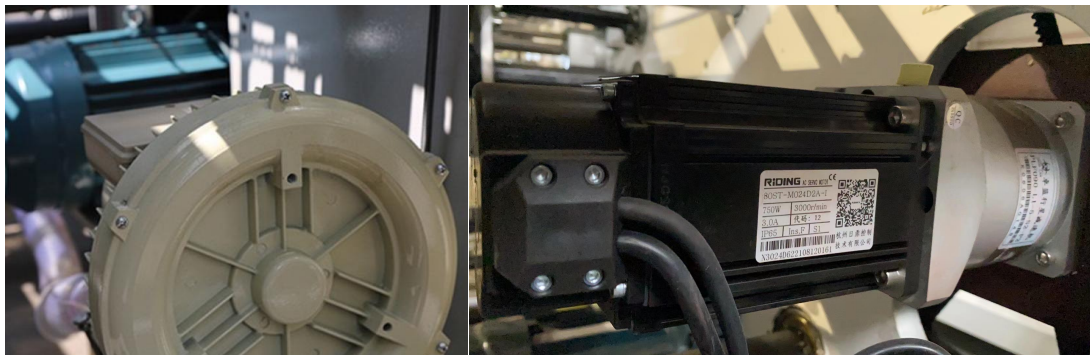
WENZHOU FEIHUA PRINTING MACHINERY CO.,LTD



2. The chain drive is adopted in the machine to ensure the smooth running, and endurable structure. Each part is separated to reduce noise and workload, as well as to increase the stability.



3. Time of paper feeding is adjusted by cam, simply operating, reducing failure rate. And vacuum-sucking paper feeding.



WENZHOU FEIHUA PRINTING MACHINERY CO.,LTD

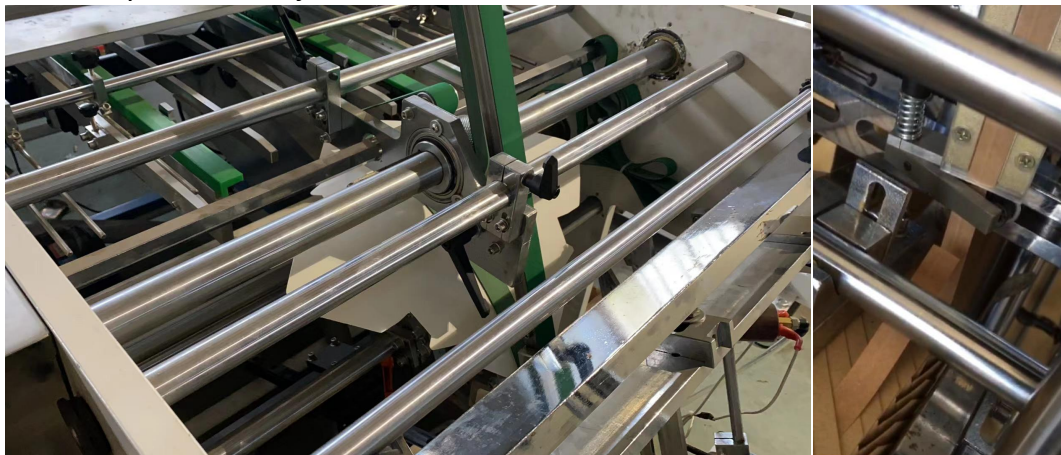
4. Automatic gluing systems controlled by reduce motor from sponge.



5. Every part of forming and collecting system can be adjusted according to the size of mold. The whole collection system can be opened to change mold and install the forming parts conveniently.






6. It adapts paper tape counting equipment to count product quickly and accurately, and to readjusted

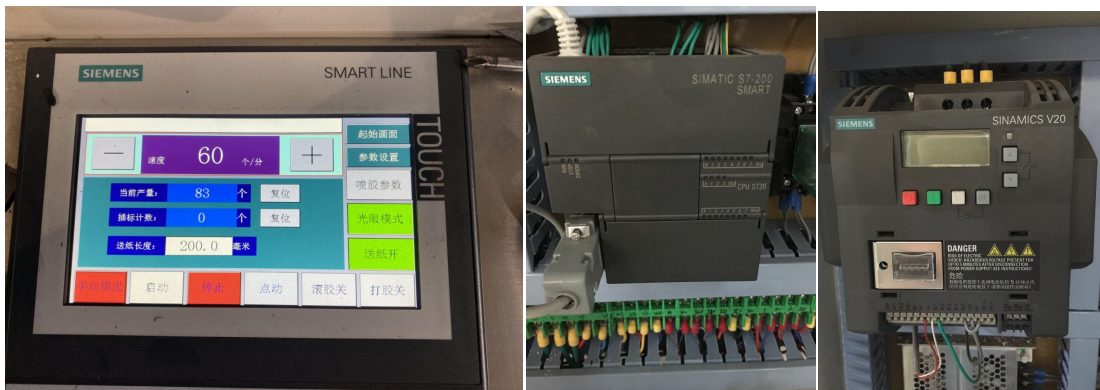


WENZHOU FEIHUA PRINTING MACHINERY CO.,LTD

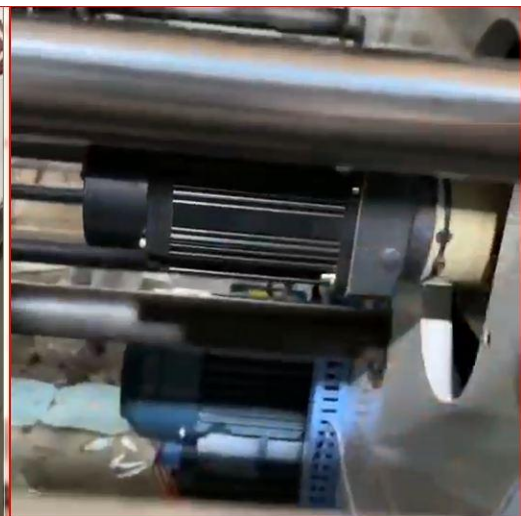
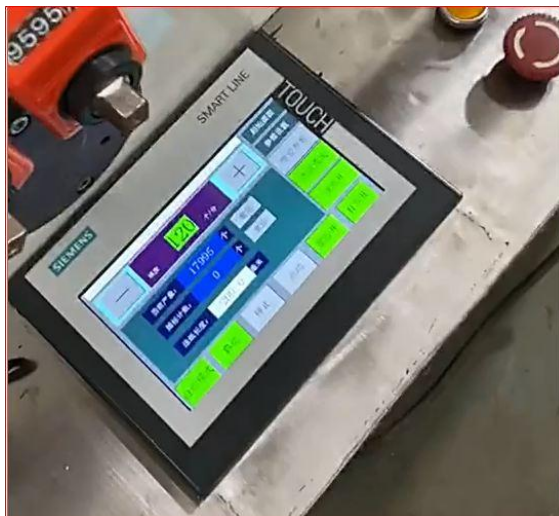
Components Brand:

Model		LJZHJ-800		
General motors		4.0KW	Three-phase 380V/50HZ	
Gluing motors		0.75kw	220/380v	
Belt		Paper feeding belt	USA	
Bearing		Main bearing	JAPAN HRB	
Main components	Linear guideway	 <small>Linear Motion product & Technology</small>	Taiwan HIWIN	
	All other electri part		SIEMENS	
	Solenoid valve	 <small>PNEUMATIC EQUIPMENT</small>	Taiwan Air TAC	
	Electrical components	Low-voltage apparatus		SIEMENS
		The inverter		SIEMENS
		Time relay		SIEMENS
		PLC		SIEMENS
		Touch screen		SIEMENS

More pictures



WENZHOU FEIHUA PRINTING MACHINERY CO.,LTD



WENZHOU FEIHUA PRINTING MACHINERY CO.,LTD

